

mc²96



GRAND
PRODUCTION
CONSOLE



PURE
PRECISE
PEERLESS

mc²96

GRAND PRODUCTION CONSOLE



mc²96

GRAND PRODUCTION CONSOLE

PURE. PRECISE. PEERLESS.

With experience gathered over more than 55 years, German audio innovator Lawo is distinguished by its engineering and manufacturing of the most reliable and most advanced audio mixing consoles available. Originally developed for mobile and studio broadcast environments with zero tolerance for failure, Lawo consoles are also widely chosen for their audio quality in theater, studio and live performance applications.

With the mc²96, the mc² platform is pushed beyond limitations, culminating in a pure, unparalleled audio production tool dedicated to those who can tell the difference. Whether it's intended to be used in broadcast, theater or recording – in each of these applications it stands out with a unique set of features. The mc²96 provides optimized performance within IP video production environments with a 7-band equalizer with three dynamic bands and a real-time analyzer (RTA).

For optimized performance within IP audio production environments, there is full support for native ST2110, AES67, RAVENNA and DANTE. Best-in-class performance in networking applications has been taken to the next level with the addition of unique capabilities such as HOME's simplified network setup and dynamic surface-to-backend allocation. All of this and more, simply reinforces this console's place as the number one choice within complex IP-based production infrastructures.

Push the envelope and take your audio production capabilities even further than you imagined with the mc²96. This is a truly grand audio production console.

AT A GLANCE

- Powered by A__UHD Core or HOME mc² DSP app
- Frames with 24 to 200 faders
- Up to 2496 DSP channels
- Up to 448 summing buses
- 48kHz & 96kHz operation
- HOME native: IP setup as simple as analog
- Designed for IP-based infrastructures with support for all relevant IP standards: ST2110, AES67, RAVENNA, DANTE®, NDI, SRT, WebRTC, Ember+, NMOS

ENHANCED COLOR CODING

In addition to Button-Glow and colored touch-sensitive encoders, new color-TFTs allow for an even more obvious color-coding of the channel strips, resulting in enhanced visibility and faster access even in low light conditions.

HIGH QUALITY FADERS

The mc²96 features dust-proof, long-life performance faders providing consistently smooth and precise fades.

SUPER-PRECISE HD TOUCH-SCREENS

The mc²96 features state-of-the-art capacity sensing 21.5" full HD touch-screens, providing mechanical robustness and super-precise control.

A PERFECT SYMPHONY OF HARDWARE & SOFTWARE CONTROLS

The mc²96's unique design combines large screens with a low overbridge height to provide a more ergonomic profile without compromising an engineer's view. The console's super-precise 21.5" full HD touch-screens work hand-in-hand with the touch-sensitive color-illuminated rotary encoders. An equalizer window will automatically pop-up when touching the equalizer encoders, and after adjusting the parameters the auto-close function will close the window without additional user action to restore the full overview. Close positioning of the TFTs and encoders provides a constant and clear overview of parameters and graphs.

TOUCH-SENSITIVE COLOR-CODED ENCODERS

COLOR TFT MONITORS

LOUDNESS METERING

Originally requested for broadcast applications, Lawo has developed built-in loudness metering into a tool that is useful also in live, theater and house of worship applications. The feature provides full loudness control in accordance with ITU 1770 (EBU/R128 or ATSC/A85) and features peak and loudness metering either separately or in combination. In addition to the sums, Lawo Loudness Metering can also measure individual channels, which allows fast and convenient “visual” mixing for things like background singers or multiple-microphone setups for brass sections, strings and choirs.

CUSTOMIZABLE OVERBRIDGE VIEWS

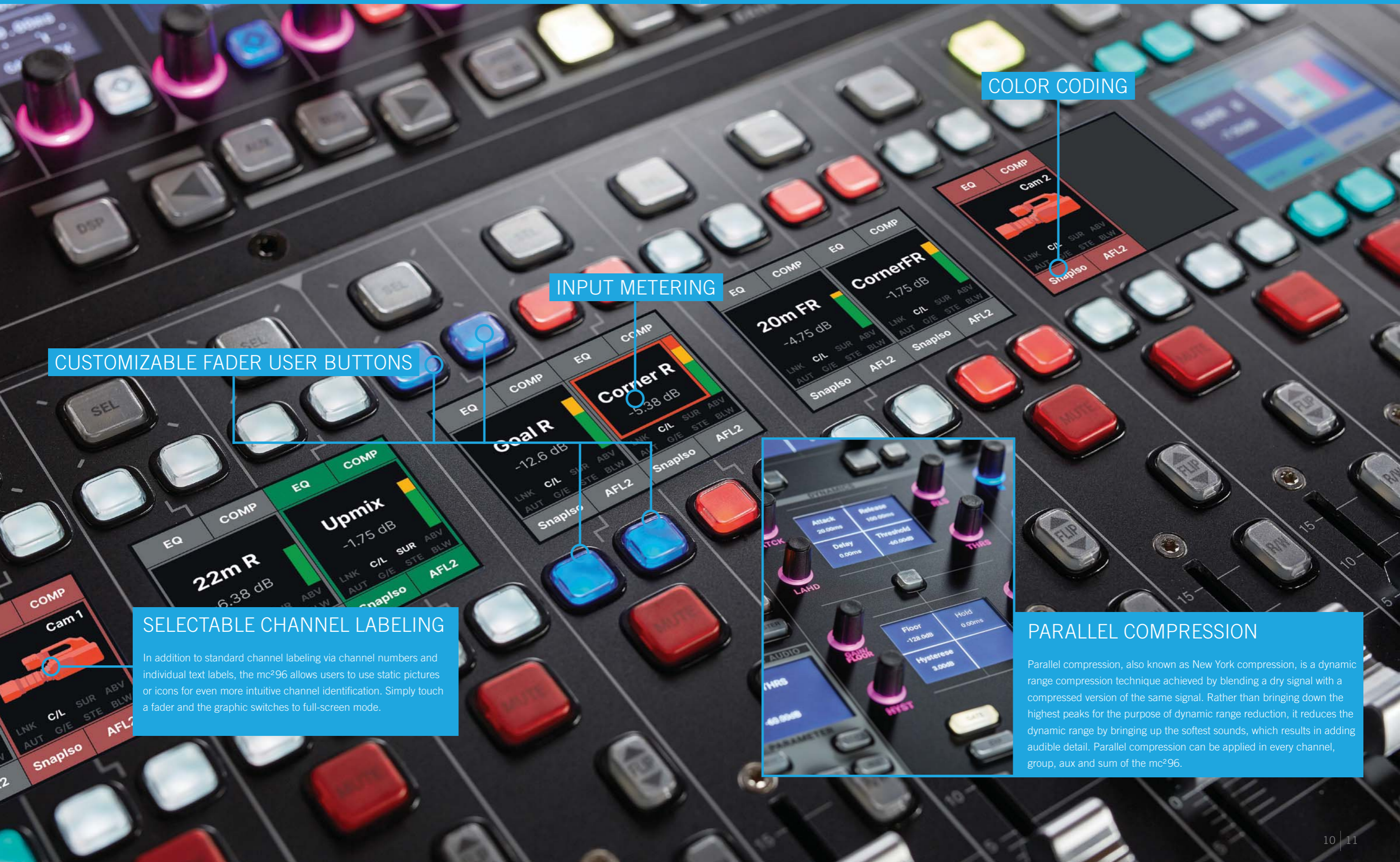
The console's overbridge can be adapted to your requirements by selecting different display formats: three mini-displays with additional processing information, more detailed bus assignments, etc. The metering section shows all fader levels permanently on the HD display. Where desired, multi-row metering allows for permanent metering of signals from other layers or banks..

MULTI-USER OPERATION

In multi-user mode, 64 rotary encoders in each 16-fader bay give direct access to all important parameters to create an additional central control panel and allow for independent operation and monitoring of a second engineer. And an EQ/Dynamics pop-up window in each channel bay even provides user-specific channel fine-tuning.

EXTENDED FREE CONTROLS

The mc²96's extended free control section gives direct access to six parameters in addition to gain control. The result: A perfect balance between de-centralized and centralized control workflows. The console allows application of both global and individual parameter assignments for the free controls of each channel strip, and each of the touch-sensitive free controls is color-coded for a comprehensive overview.



CUSTOMIZABLE FADER USER BUTTONS

INPUT METERING

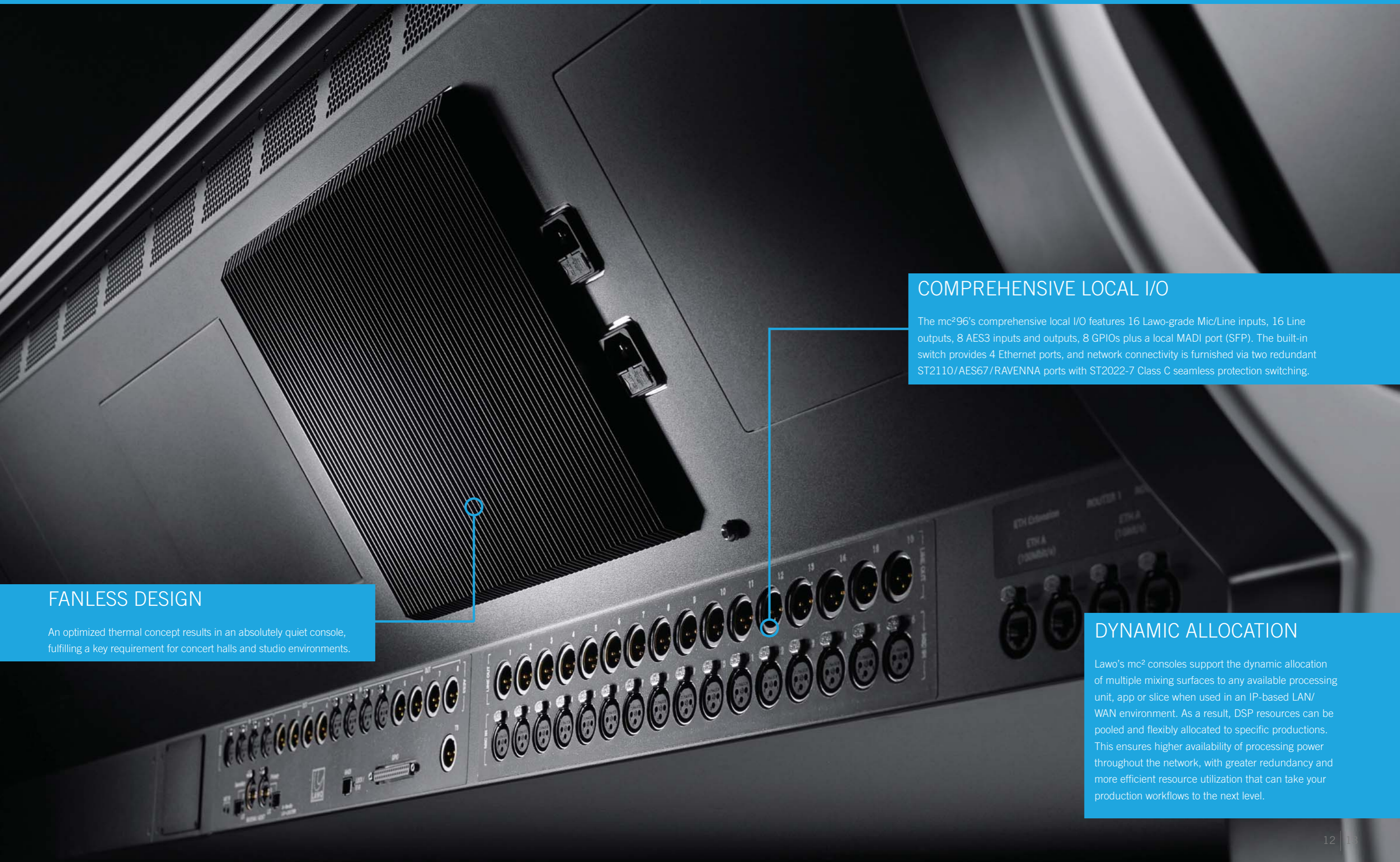
COLOR CODING

SELECTABLE CHANNEL LABELING

In addition to standard channel labeling via channel numbers and individual text labels, the mc²96 allows users to use static pictures or icons for even more intuitive channel identification. Simply touch a fader and the graphic switches to full-screen mode.

PARALLEL COMPRESSION

Parallel compression, also known as New York compression, is a dynamic range compression technique achieved by blending a dry signal with a compressed version of the same signal. Rather than bringing down the highest peaks for the purpose of dynamic range reduction, it reduces the dynamic range by bringing up the softest sounds, which results in adding audible detail. Parallel compression can be applied in every channel, group, aux and sum of the mc²96.



FANLESS DESIGN

An optimized thermal concept results in an absolutely quiet console, fulfilling a key requirement for concert halls and studio environments.

COMPREHENSIVE LOCAL I/O

The mc²96's comprehensive local I/O features 16 Lawo-grade Mic/Line inputs, 16 Line outputs, 8 AES3 inputs and outputs, 8 GPIOs plus a local MADI port (SFP). The built-in switch provides 4 Ethernet ports, and network connectivity is furnished via two redundant ST2110/AES67/RAVENNA ports with ST2022-7 Class C seamless protection switching.

DYNAMIC ALLOCATION

Lawo's mc² consoles support the dynamic allocation of multiple mixing surfaces to any available processing unit, app or slice when used in an IP-based LAN/WAN environment. As a result, DSP resources can be pooled and flexibly allocated to specific productions. This ensures higher availability of processing power throughout the network, with greater redundancy and more efficient resource utilization that can take your production workflows to the next level.

mc²96

GRAND PRODUCTION CONSOLE

mc²96 24c+32 with integrated RTW TM9 Goniometer



DESIGNED FOR THOSE WHO CAN TELL THE DIFFERENCE.

mc²96

CENTRAL CONTROL SECTION



INTEGRATED RTW TM9 PHASE SCOPE

INTUITIVE MONITORING

The newly designed monitoring section features a dedicated touch-screen, allowing for enhanced flexibility and easy adaptation to user requirements.

IMMERSIVE BY NATURE

Reflecting today's requirements for 3D/immersive audio productions, the mc²96 provides not only superb tools for surround sound mixing, but also a dedicated elevation controller as standard.

MAKE IT YOUR WAY – USER PANELS

The mc²96's clearly structured central control section delivers an optimal workflow with maximum overview. In addition, it contains two slots for individual user panels, which can be filled with a choice of three options: an additional 40 buttons, a TC automation panel, or a dedicated Reveal Fader panel – the choice is yours.

AUDIO-FOLLOWS-VIDEO

Automated transitions and the perfect coupling of image and sound – all of this is provided by the mc²96's Audio-follows-Video function. Each camera tally is assigned to an event, which can be selected in one or more channels, with a total of 256 available events. The Rise Time, On Time, Hold Time, Max Time and Fall Time parameters can be used to set the processing envelope, creating amazingly smooth and natural sounding transitions from camera to camera.

mc²96

XTRA FADER VERSION & DUAL FADER OPTION

USER PANEL SLOT

The mc² 96 Xtra fader version contains one slots for individual user panels, which in this case is filled with a dedicated Reveal Fader panel. There's also an additional 40 buttons or a TC automation panel available.

Features	mc ² 96	mc ² 96 Xtra
Number of faders in Central Control Section	8	16
Max. number of faders (Standard panels)	88	96
Max. number of faders (Dual fader panels)	200	208
Number of User Panel Slots	2	1

DUAL FADER OPTION

The dual-fader operating surface increases the console's fader count while keeping its size small. The dual fader option features also a total of two free controls and also incorporates Lawo's revolutionary LiveView™ thumbnail previews of associated video streams directly in the fader strips, enhancing user accuracy in fast-paced production situations.

XTRA FADERS

The mc² 96's Xtra fader version features an alternative layout for the central control section, resulting in 16 instead of eight faders in the Sweet Spot.

mc²96

FEATURES

AUTOMATED MIXING ASSISTANTS

The mc²96's automated mixing capabilities include an Automix function that can automatically adjust the levels of active and inactive microphones, while maintaining a constant, natural sounding ambient level. This feature provides unique functionality especially in live productions with multiple presenters or performers. Automix can be used for any signals—from mono and stereo to multiple surround channels—to minimize background noise and crosstalk with reduced sound coloration. Truncated sentences and late fade-ins are things of the past, enabling the sound engineer to focus on overall balance and sound quality.

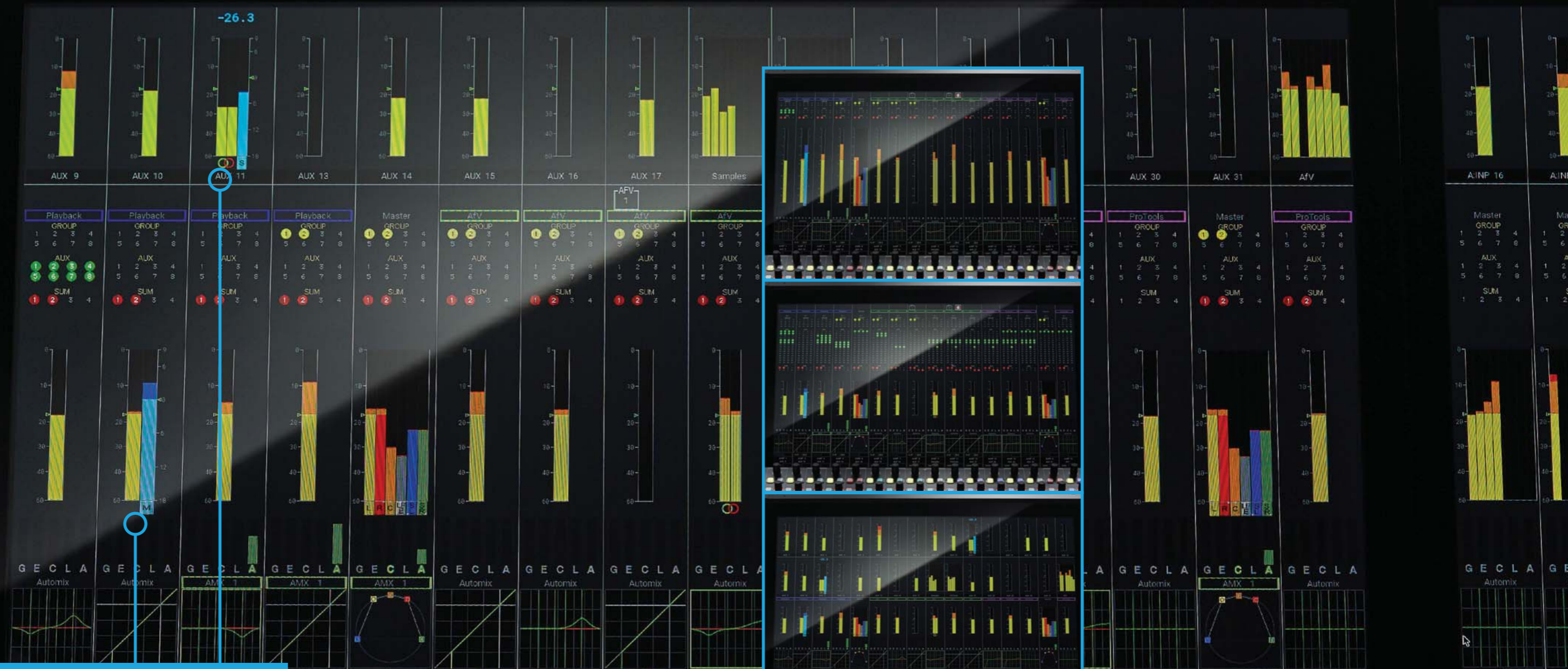
The console also features a Downmix function and Lawo's highly acclaimed AMBIT Upmix function, which guarantees perfect conversion of stereo signals to amazingly authentic Surround audio using just a few parameters. Last but not least, the mc²96 is ready for KICK 2.0, Lawo's automated close-ball mixing solution for sports such as soccer, football, hockey, etc.

HOME

Being an IP-native device, the mc²96 includes Lawo's HOME functionality that makes any IP setup as simple as analog. The console automatically detects devices and makes them available at the push of a button. Device management includes all required security features such as access control and quarantining of unknown devices. HOME is a management platform for IP-based media infrastructures designed to connect, manage, secure and process all aspects and instances of live production environments.

REMOTE DESKTOP

Lawo's integrated Remote Desktop function allows seamless integration into the console's user interface of multiple external PCs running third-party solutions. With the switch of a button, the external PC and its software applications are displayed in the console's screen while the console's keyboard, touchpad and touchscreen provide control. The seamless integration of external recording systems, effect engines, or other user interfaces, means less equipment - and the engineer has control over the complete set-up, conveniently from a single, central position.



INTEGRATED LOUDNESS METERING

Originally requested for broadcast applications, Lawo has developed built-in loudness metering into a tool that is useful also in live, theater and house of worship applications. The feature provides full loudness control in accordance with ITU 1770 (EBU/R128 or ATSC/A85) and features peak and loudness metering either separately or in combination. In addition to the sums, Lawo Loudness Metering can also measure individual channels, which allows fast and convenient “visual” mixing for things like background singers or multiple-microphone setups for brass sections, strings and choirs.

CUSTOMIZABLE OVERBRIDGE VIEWS

The console's overbridge can be adapted to your requirements by adjusting the channel display accordingly – just choose and display those parameters that are important and hide any unnecessary or distracting elements. The metering shows all fader levels permanently on the HD display. In addition, multi-row metering allows for permanent metering of signals from other layers or banks. There is also a DSP pop-up module for each channel bay, which is good news for multi-operator workflows.

HIGHLIGHTS FOR BROADCAST

- IP-based infrastructure with support for all relevant IP standards: SMPTE ST2110, AES67, RAVENNA and Dante
- HOME-native network configuration
- Optimized for multi-user operation
- 7-band EQ with 3 dynamic bands for all channels
- Advanced mix assist systems (AutoMix, UpMix, DownMix, prepared for KICK)
- Processing capacity for up to 2496 DSP channels, 448 summing busses and 256 AUX busses
- 48kHz & 96kHz operation
- Comprehensive Audio-follows-Video functionality
- Integrated 3D/Immersive mixing tools
- Parallel compression
- Integrated loudness metering
- Enhanced signal management functions for large productions (including swap and relocate)

HIGHLIGHTS FOR RECORDING

- Dynamic timecode automation
- Lawo-grade microphone preamps and processing algorithms
- 7-band EQ with 3 dynamic bands for all channels
- Machine/DAW remote control
- Merging OASIS Integration
- Fully customizable signal chain with five independent dynamic modules
- Clickless-delay adjustments
- Parallel compression
- Ultra low-noise console design
- Various OSC integrations, including OSC Show Control, Boris FX Sequoia and generic OSC support

HIGHLIGHTS FOR PERFORMING ARTS

- Selective Recall
- Oversnaps (relative trim-sets)
- Comprehensive theater automation cue list including multiple triggers (MIDI, GPI/O, LTC, ...)
- Offline mode/Snapshot preview
- VCA Map for UI driven VCA assignments
- Various OSC integrations, including OSC Show Control and generic OSC support
- Waves® plugin integration, with immersive support via the Waves Immersive Wrapper plugin
- Workflow-specific customization of functionality and features
- Clickless-delay adjustments
- Mirror-console operation
- A/B/C input switch
- Cascaded/nested VCAs
- Integrated loudness metering for “visual” mixing

POOLING LICENSES FOR A__UHD CORE

Optional Pooling licenses allow operators to use a single A__UHD Core to power up to 32 mixing consoles, each utilizing the required DSP channel resources for mc² surfaces, crystal Controller setups, VisTool, broadcast controllers, etc. Each slice comes with its own routing matrix and mixing console peripherals, and is operationally completely independent.

ASSOCIATED PRODUCTS

AUDIO PROCESSING

A__UHD Core – Ultra-high Density IP Audio Engine

- 19”/1 RU frame
- 1,024 DSP channels
- ST2110-30/-31, AES67, RAVENNA
- 1:1 redundancy available
- Up to 256 AUX busses, 96 Groups, 96 Sums (simultaneously where desired)
- 32 infinite Automix Groups
- Sampling rate: 44.1kHz, 48kHz, 96kHz
- Support for mono, stereo, 5.1, immersive audio
- Downmixes for stereo, 5.1 and immersive processing channels
- AFL 1: stereo & surround, PFL 1 stereo; AFL 2: stereo, PFL 2 stereo
- Compatible control surfaces: mc² consoles, crystal Controller console, headless mixing systems
- DSP resources shareable amongst multiple consoles
- Scalable DSP performance via licensing system
- Software-defined hardware

HOME mc² DSP – Microservice-based, Agile Audio Engine

- Runs on CPU with the same low latency as A__UHD Core and the same mc²-style processing channels
- Same features as the A__UHD Core, except for the following
- Up to 2048 Inputs
- Sampling rate: 48kHz, 96kHz
- Syntonous 48/96kHz sample rate conversion
- Virtual Loopbacks (vLoopbacks)
- Supported audio formats: ST2110-30 (incl. RAVENNA, AES67), NDI, SRT and Dante*
- Tone generator: Sine, White Noise, Pink Noise, EBU Stereo, BLITS 5.1

AUDIO/VIDEO CONNECTIVITY

Edge One – Converged Video & Audio Stagebox

- SDI, HDMI, MADI, USB-C and analog audio
- Pre-amp control from Lawo audio consoles
- Low-latency audio monitoring and processing
- Compact form factor
- Internal test signals, video frame sync, test pattern generator, text insertion, etc.
- On-board WAN capability

AUDIO I/O DEVICES

A__line – WAN-capable Audio-to-IP Interfaces

- A__mic8: 8x Mic/Line in, 4x Line out, 8/8 GPIO
- A__madi6: 6x MADI, Wordclock, 6x 1 GbE
- A__stage48: 16x Mic/Line in, 16x Line Out, 8x AES3 In/Out, 1x MADI (redundant pair), 8/8 GPIO, Wordclock, 2x 1 GbE
- A__stage64: 32x Mic/Line in, 16x Line Out, 8x AES3 In/Out, 1x MADI (redundant pair), 8/8 GPIO, Wordclock, 2x 1 GbE
- A__stage80: 32x Mic/Line in, 32x Line out, 8x AES3 In/Out, 1x MADI (redundant pair), 8/8 GPIO, Wordclock, 2x 1 GbE
- A__digital64: 32x AES3 inputs (stereo) on SUB-D25 with SRC (28.4~100kHz input fs); 32x AES3 outputs (stereo) on SUB-D25; 2x MADI ports (redundant pair) on SFP

Power Core Gateway – Modular IP Audio I/O Node

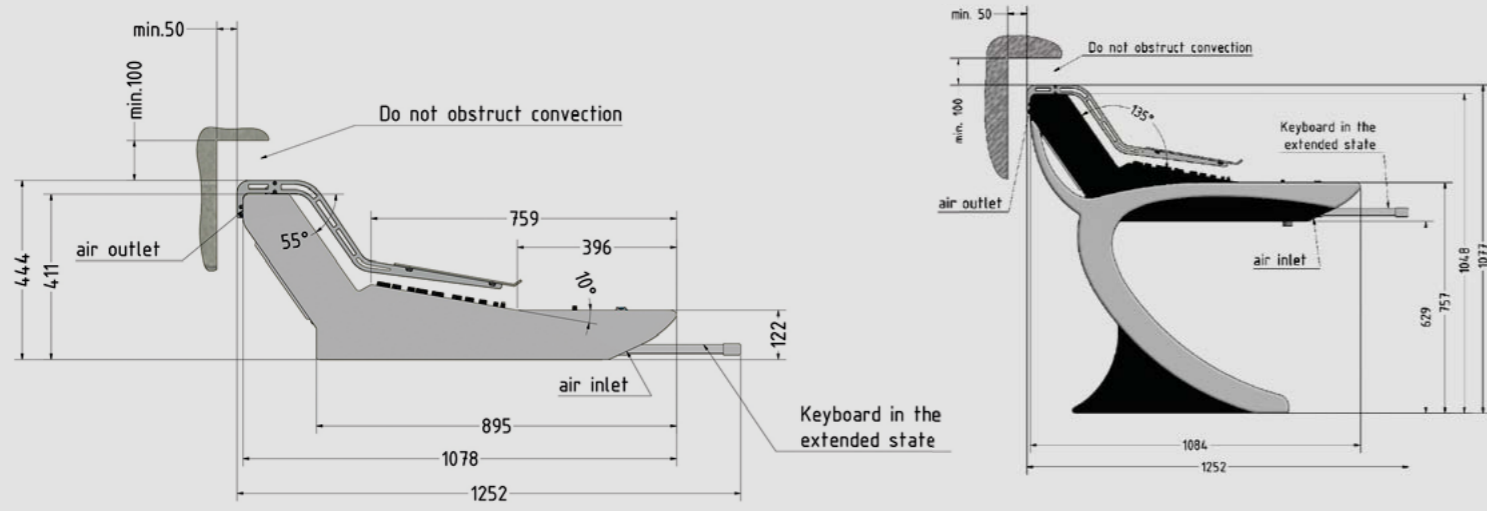
- 19”/1 RU frame
- 128 I/O channels via modular I/O cards: Mic/Line In, Line Out, AES3 In/Out, Dante, MADI, GPIO, Studio

Power Core RP – Modular IP Audio I/O Node

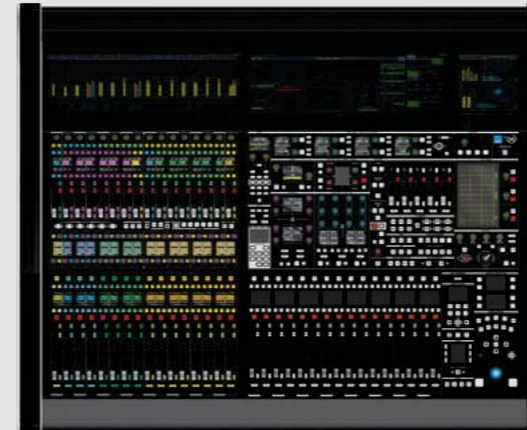
- 64 MADI I/O channels, up to 96kHz
- 2x 1 GbE IP streaming ports (ST2022-7 Class C), ST2110, AES67, RAVENNA, on-board WAN capability
- Comprehensive remote production solution for mc² audio consoles, complete with modular I/O, IP streaming, and 64 fully-featured DSP channels
- Low-latency on-site monitoring and IFB mixing

mc²96

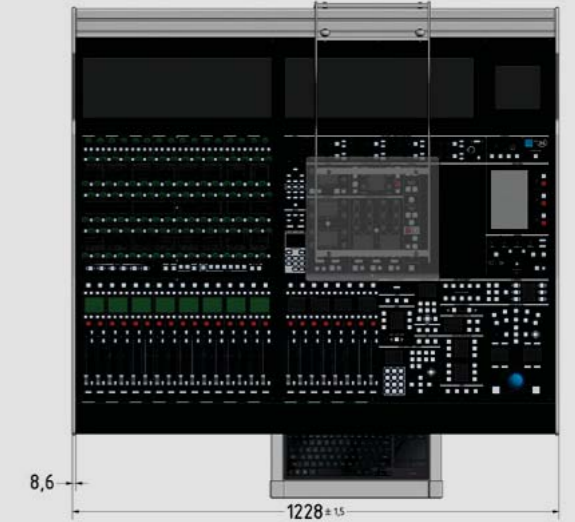
SPECIFICATIONS



Per 16 fader extension plus 510mm width



Xtra Fader Version (with Dual Fader Panel)



mc²96

mc ² 96	STUDIO / LIVE VERSION	OB TRUCK VERSION	
24C	<ul style="list-style-type: none"> Width: 1333mm/52.48" Weight: 102kg/224.9lb 	<ul style="list-style-type: none"> Width: 1228mm/48.35" Weight: 79kg/174.2lb 	
24C+16	<ul style="list-style-type: none"> Width: 1843mm/72.56" Weight: 128kg/282.2lb 	<ul style="list-style-type: none"> Width: 1738mm/68.43" Weight: 105kg/231.5lb 	
16+24C+16	<ul style="list-style-type: none"> Width: 2353mm/92.64" Weight: 152kg/335.1lb 	<ul style="list-style-type: none"> Width: 2248mm/88.50" Weight: 129kg/284.4lb 	
16+24C+32	<ul style="list-style-type: none"> Width: 2863mm/112.72" Weight: 183kg/403.5lb 	<ul style="list-style-type: none"> Width: 2758mm/108.58" Weight: 160kg/352.7lb 	
32+24C+32	<ul style="list-style-type: none"> Width: 3373mm/132.80" Weight: 214kg/471.8lb 	<ul style="list-style-type: none"> Width: 3268mm/128.66" Weight: 191kg/421.1lb 	
16 Fader Stand Alone	<ul style="list-style-type: none"> Width: 633mm/24.92" Weight: 60kg/132.3lb 	<ul style="list-style-type: none"> Width: 528mm/20.8" Weight: 37kg/81.6lb 	

Surface module arrangement can be freely adjusted, allowing also for asymmetrical layouts.

mc²96 Xtra Fader Version

mc ² 96	STUDIO / LIVE VERSION	OB TRUCK VERSION	
32C	<ul style="list-style-type: none"> Width: 1333mm/52.48" Weight: 102kg/224.9lb 	<ul style="list-style-type: none"> Width: 1228mm/48.35" Weight: 79kg/174.2lb 	
32C+16	<ul style="list-style-type: none"> Width: 1843mm/72.56" Weight: 128kg/282.2lb 	<ul style="list-style-type: none"> Width: 1738mm/68.43" Weight: 105kg/231.5lb 	
16+32C+16	<ul style="list-style-type: none"> Width: 2353mm/92.64" Weight: 152kg/335.1lb 	<ul style="list-style-type: none"> Width: 2248mm/88.50" Weight: 129kg/284.4lb 	
16+32C+32	<ul style="list-style-type: none"> Width: 2863mm/112.72" Weight: 183kg/403.5lb 	<ul style="list-style-type: none"> Width: 2758mm/108.58" Weight: 160kg/352.7lb 	
32+32C+32	<ul style="list-style-type: none"> Width: 3373mm/132.80" Weight: 214kg/471.8lb 	<ul style="list-style-type: none"> Width: 3268mm/128.66" Weight: 191kg/421.1lb 	

mc²96

SPECIFICATIONS

CONTROL PANEL

- Frames from 24 to 200 faders* (Xtra fader version: 208)
- Remote stand-alone frames with 16 faders
- 6 banks, each with 2 layers
- 100mm fader + 6 freely adjustable rotary knobs or 100 mm + 60 mm dual faders + Input-Gain controller + channel display for each fader with sense-triggered change of module display: up to three DSP module displays per channel strip, plus decentralized pop-ups
- TFT metering: mono, stereo or multi-channel immersive including bus assignment, gain reduction for dynamics, Afv status, VCA assignment, Mix-Minus, Signal Patching, Meter selection, Automix state
- Comprehensive touch operation: DSP control, signal assignments, Bus/VCA assignments, Automix, Mix-Minus, metering selection, and source settings
- GUI page output, e.g. metering, on an external monitor
- 12 user buttons**, 4 talkback buttons and 4 user buttons per fader with 16 functions each
- Optional: two integrated user panels (Xtra fader version: one integrated user panel): TC automation panel, 40 user button panel, reveal fader panel, script tray

SIGNAL PROCESSING

- 40-bit floating point
- A__UHD Core: 1,024 DSP channels (number of inputs and buses depends on A__UHD Core and configuration); immersive audio support up to 9.1.6; Up to 1024 inputs with A/B/C input; up to 96 busses
- HOME mc² DSP: 2,496 DSP channels; immersive audio support up to 9.1.6; up to 448 busses
- Supported audio formats:
 - A__UHD Core – SMPTE ST2110-30/31 (incl. RAVENNA, AES67)
 - HOME mc² DSP – SMPTE ST2110-30 (incl. RAVENNA, AES67), NDI, SRT and Dante
- Up to 256 AUX busses, up to 96 groups, 96 sums, up to 128 VCA groups with metering, 256 GP channels
- A__UHD Core: up to 32 Automix groups per virtual A__UHD Core mixer
- HOME mc² DSP: up to 32 infinite Automix groups
- 3D multichannel downmixing for all supported immersive channel counts
- Rapid switching of channel and bus to mono/stereo/surround
- 2 AFL: 1 immersive audio, 1 stereo
- 2x PFL stereo
- Audio-follow-Video with 128 events, control via Ember+, GPI or matrix connection, envelope up to 10s fade time
- Solo In Place
- 5 independent dynamics modules: expander, gate, compressor (incl. parallel compression), limiter, de-esser; image, meter, direct out; multi-channel processing
- Adjustable INPUT, PF, AF, DIROUT, TRACK meter point in channel display
- Loudness Metering according to EBU R128, ATSC A/85 and ARIB, momentary or short term in every channel, integrated measurement on summing channels with display of integrated LUFS value in headline
- Modules (per channel): INMIX with MS decoder, digital amp, 2-band fully parametric filter, 7-band fully parametric EQ with 3 dynamic bands, real-time analyzer, 2-band fully parametric side chain filter, insert, delay up to 1800ms – switchable units: meters, milliseconds, frames
- AMBIT Upmix, available on every 5.1 channel, fully Downmix compatible

AUDIO HANDLING

- HOME – routing with dynamic support of network resources
- Internal matrix for RX and TX audio
- A__UHD Core stream sizes from 1 up to 128 audio channels
HOME mc² DSP stream sizes from 1 up to 64 audio channels
- Up to 96kHz, 24-bit
- Downmixing from immersive audio to stereo
- Integrated monitoring devices for remote locations, e.g. director's room
- Internal loopbacks
- Full Snapshot and production portability independent of matrix and DSP size

WAVES® PLUGIN INTEGRATION

- Waves SuperRack SoundGrid® and SuperRack LiveBox using new Waves ProLink API; synced snapshot generation in Waves

INTERFACES

- Mic/Line In, Line Out, AES3, MADI, SMPTE ST2110-30/-31/ AES67/RAVENNA, Dante*
- Headphones

SYNCHRONIZATION

- Wordclock, PTP Slave and Grandmaster modes

REDUNDANCY

- PSUs, Network Interfaces (ST2022-7 Class C)

CONTROL UNIT

- Bay ISO with separate layer and bank switching, plus second PFL/AFL bus
- Global A/B input switching
- Enhanced mix-minus control with independent off-air conference
- Fader control of all level parameters
- Diverse tally and fader start modes
- Program switch
- Machine control
- Audio-follow-Video, up to 256 camera tallies, Ethernet or GPI controlled
- Camera mic remote via GPI or voltage control

REMOTE MAINTENANCE

- Connection via mxGUI remote software
- Software updates, error diagnostics, remote assistance

EXTERNAL CONTROL SYSTEMS

- Remote control of 0sart, and others

* with dual fader option

** Xtra Fader Version: 8 User buttons

(*) Dante support for HOME mc² DSP is a future product development. For A__UHD Core, it requires a Power Core with a Dante card, which is readily available.

mc²96

SPECIAL FEATURE

AMBIENT LIGHTING

The console's bottom features RGB colored LED lighting, allowing the console to perfectly match with its environment.

mc² 96

GRAND PRODUCTION CONSOLE

© 2026 Lawo AG. All rights reserved. Windows is a registered trademark of Microsoft Corporation. Other company and product names mentioned herein may be trademarks of their respective owners. Product specifications are subject to change without notice. This material is provided for information purposes only; Lawo assumes no liability related to its use. As of April 2026.



This document is printed on FSC®-certified paper.

HEADQUARTERS

Lawo AG
Rastatt
GERMANY
+ 49 7222 1002 0
sales@lawo.com

INTERNATIONAL OFFICES

CANADA	+ 1 416 292 0078
CHINA	+ 86 10 6439 2518
NORWAY	+ 47 22 106110
SINGAPORE	+ 65 9818 3328
SWITZERLAND	+ 49 7222 1002 0
UK	+ 44 333 444 5296
USA	+ 1 888 810 4468

RENTAL SERVICE

+ 49 7222 1002 0
rental@lawo.com

690-0037-000



www.lawo.com

